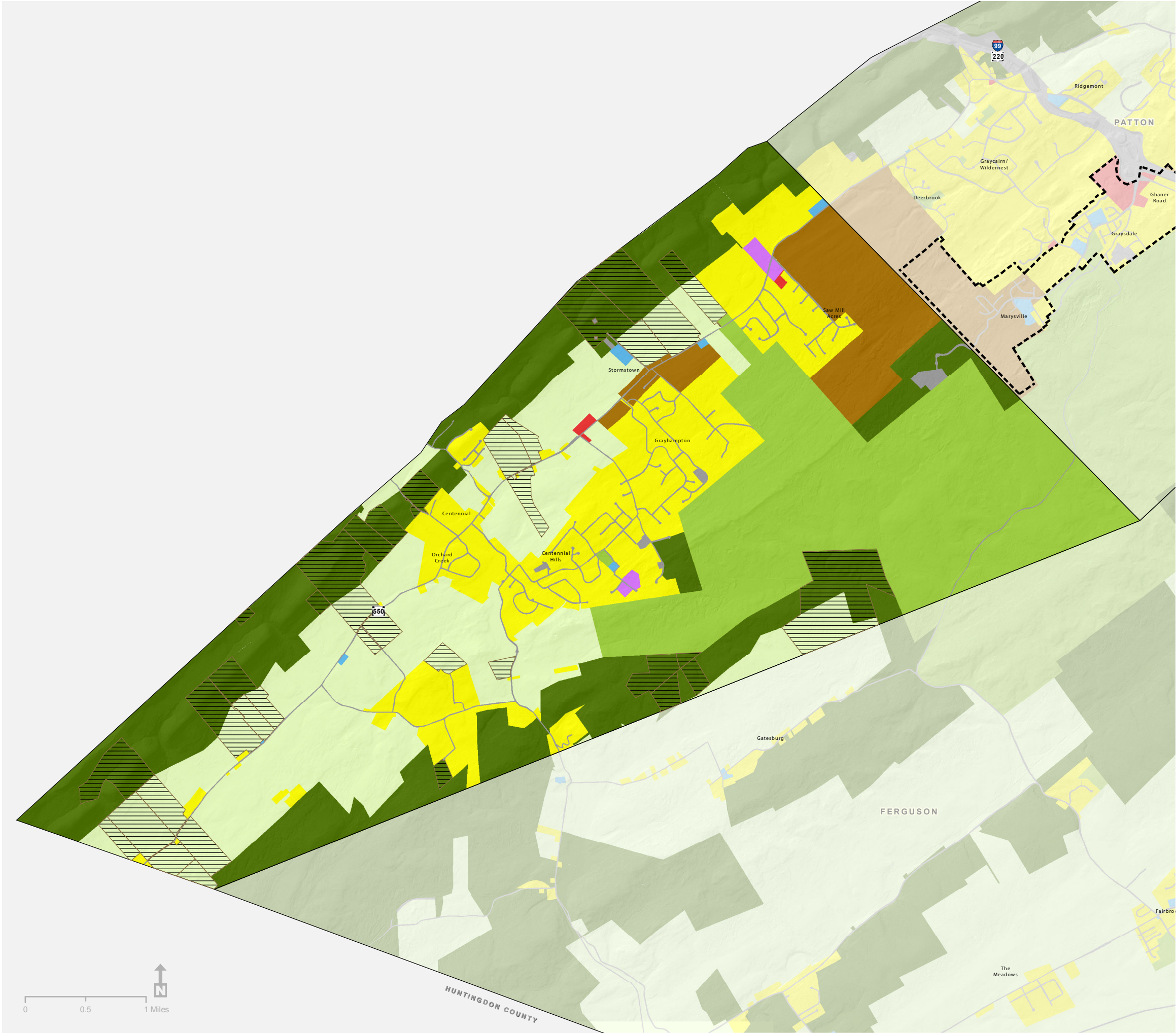


The Centre Region Comprehensive Plan

Future Land Use Halfmoon Township

- Future Land Use**
- Agriculture
 - Commercial/Office
 - Downtown District
 - Forest
 - Industrial/Office
 - Mixed Use
 - Parks/Recreation/Conservation
 - Public/Institutional
 - Residential
 - Transportation/Communication/ Utilities
 - Leased Easement
- Regional Features**
- Regional Growth Boundary/ Sewer Service Area
 - Municipal Boundary



Projection: PA State Plane NAD 83, North Zone
Prepared by: Steven Arnold - Geospatial Technology Program
at Penn State for the Centre Regional Planning Agency
Date: 7/22/2013

Data Source: Centre County GIS, USGS, The Centre Regional
Planning Agency, Geospatial Technology Program at Penn State.